

A Co-Housing Opportunity in Cambridge - Grasping the Opportunities

Katie Thornburrow

15 March 2012



**CAMBRIDGE
ARCHITECTURAL
RESEARCH
LIMITED**

Our Goals

- Overall Objectives:
 - Develop an outline site plan
 - Help you think about broader issues around the K1 community
- This Session
 - Present outcomes of previous discussion
 - Explore implications of earlier requirements analysis
 - Reach conclusion for next steps

Recap

Fundamental Considerations Underpinning the Design

Separate grouping vs open to surroundings

Private open space vs shared open space.

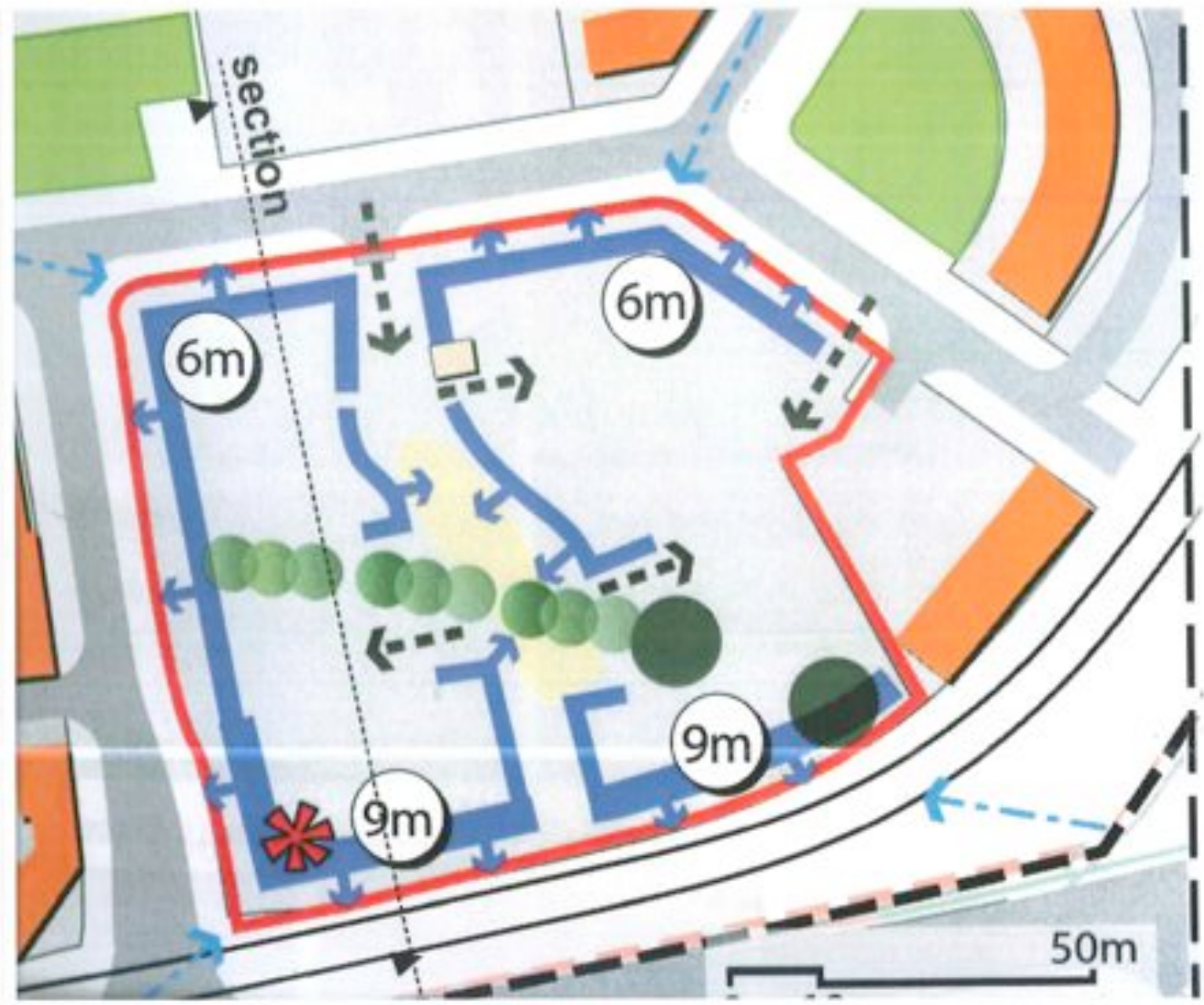
Private enclosed space vs shared enclosed space.

Individual expression vs collective expression

Experiment with innovative technology vs established technology

Visually distinctive vs visually ordinary

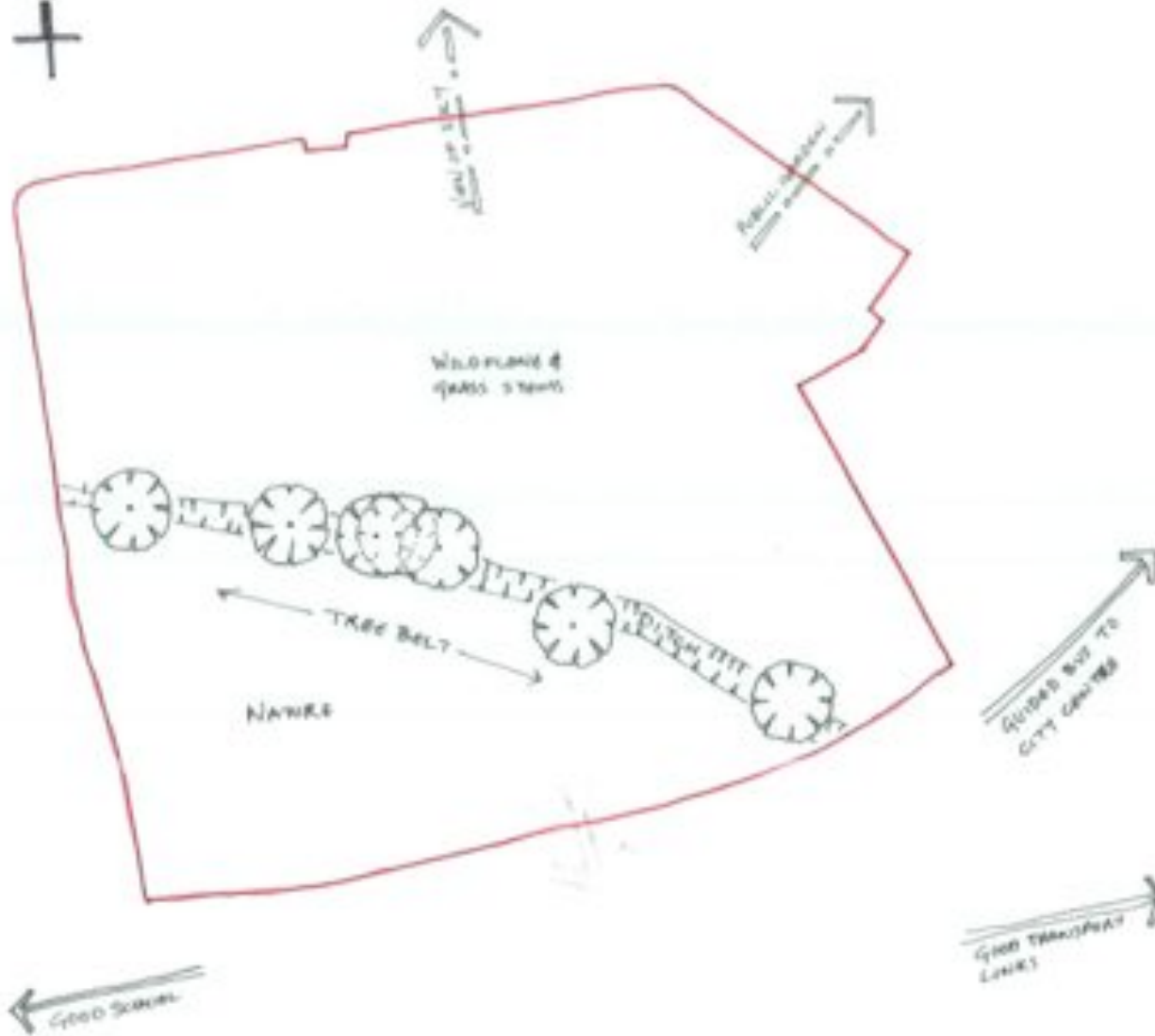








1:500



LIKES

CONDITIONS WHICH WANT
TO BE MAINTAINED

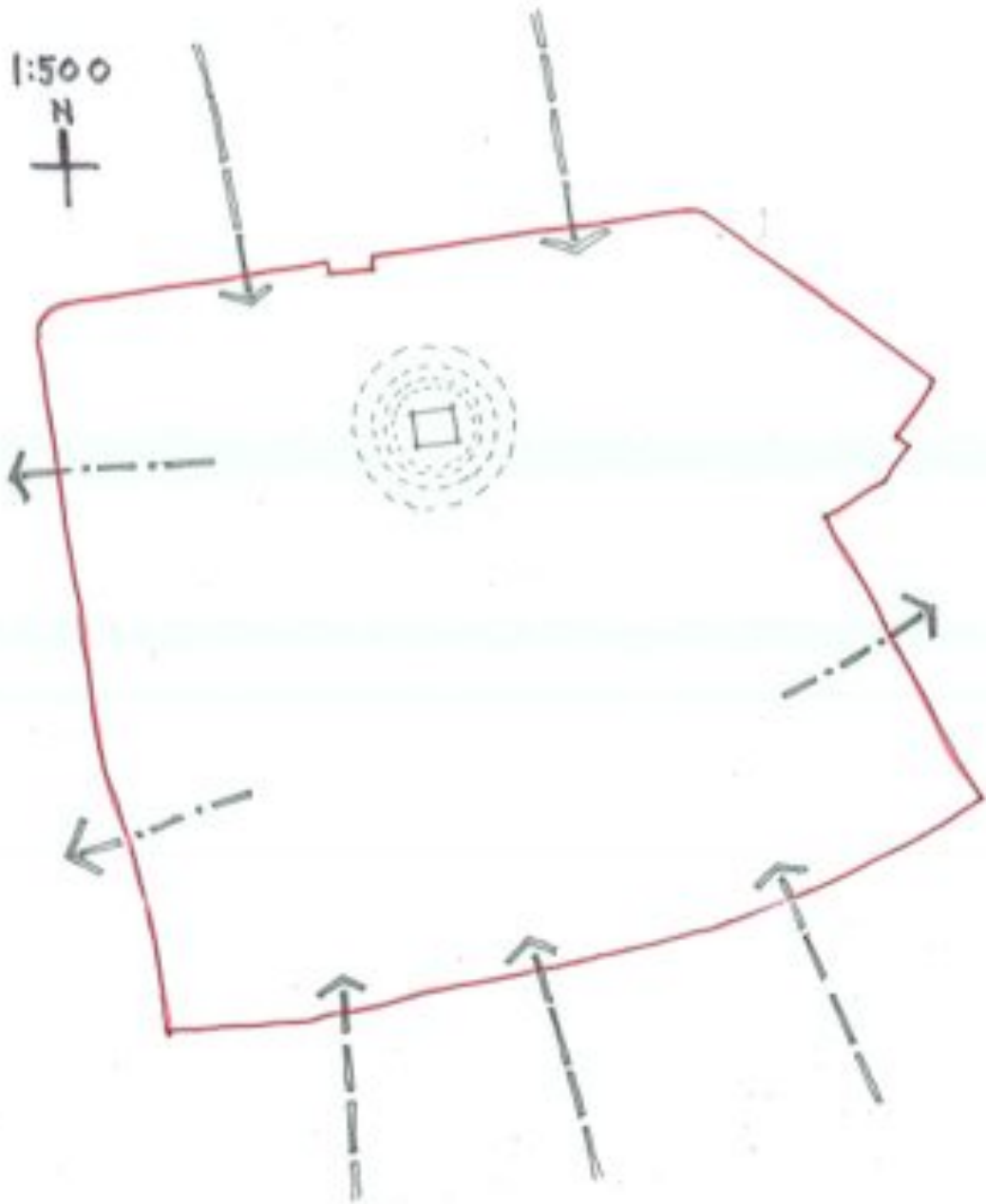
+ GREEN INFRASTRUCTURE

+ VIEWS 

+ ACCESS TO:




- TRANSPORT
- SCHOOLS
- JOBS
- AMENITIES

1:500
N
+



DISLIKES

CONDITIONS WHICH CAN BE ACTIVATED

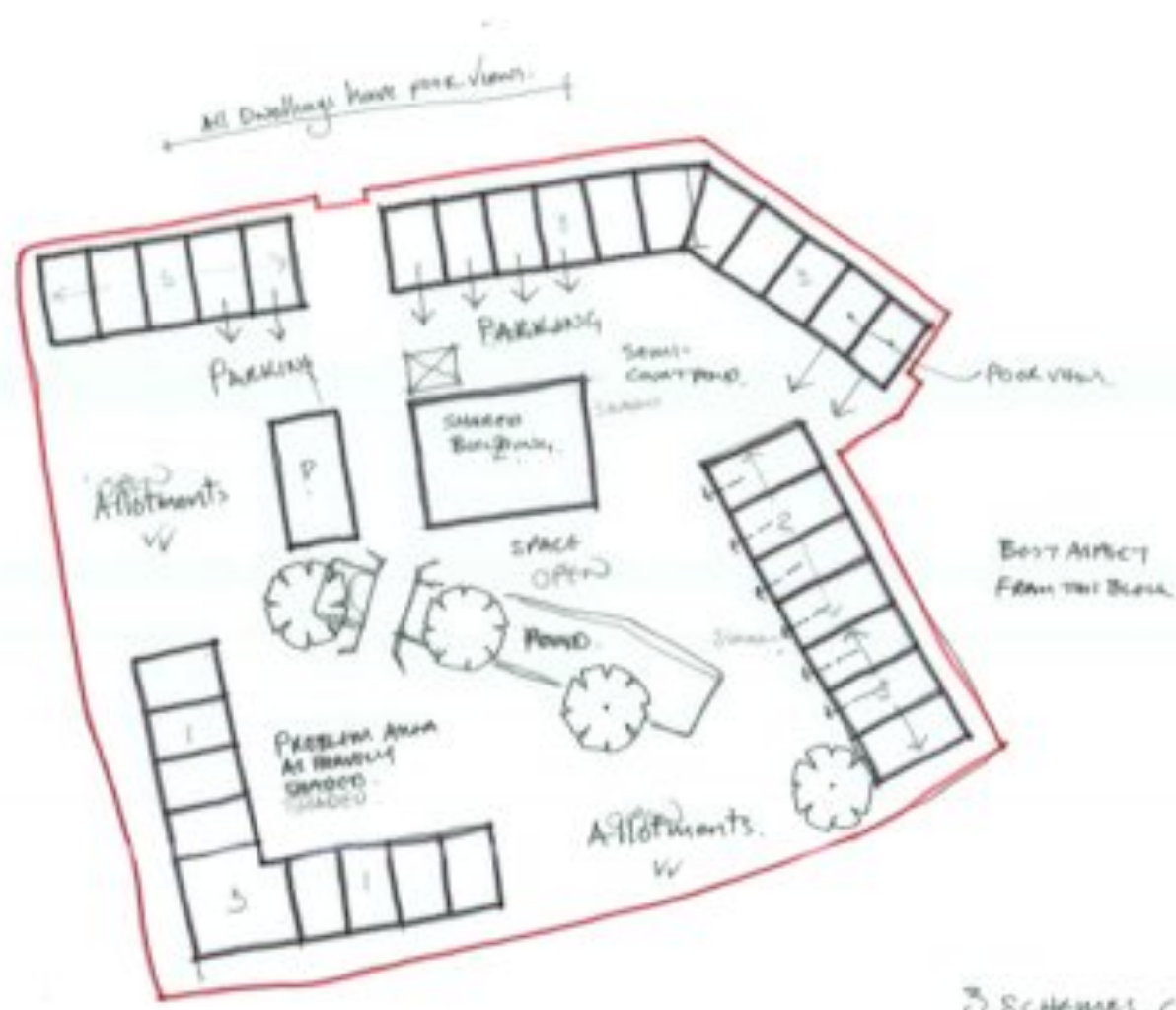
- NOISE 
- VIEWS 
- EDF SUBSTATION 



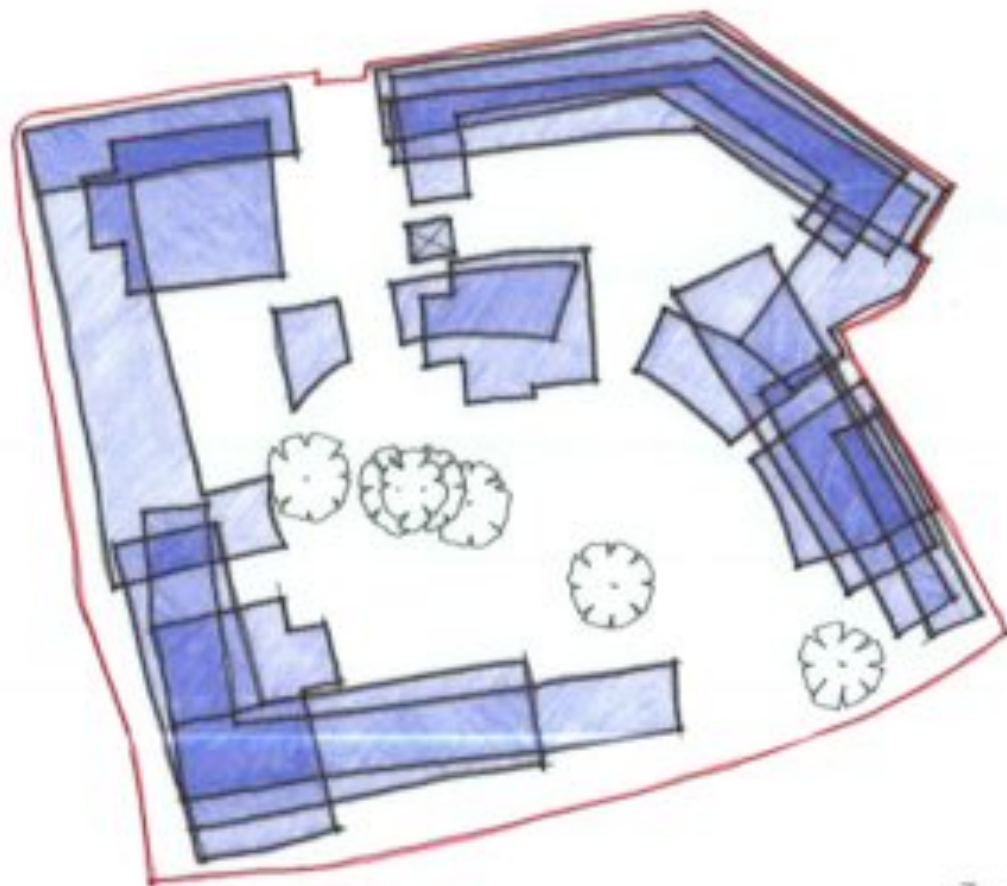








3 SCHEMES COMMON



3 SCHEMES OVER LAID.

